



WATER-COOLED



THREE PHASE



50 HZ



DIESEL

Note : Pictures shown are for illustration purpose only

Generating Rates



SERVICE		PRP	STANDBY
Power	kVA	30	33
Power	kW	24	26
Rated Speed	r.p.m	1.500	
Standart Voltage	V	400	
Available Voltage	V	380 / 220 V	
Rated at power factor	Cos Phi	0.8	

MG Power Company with quality certification ISO 9001

MG Power gensets are compliant with EC mark which includes the following directives:



STANDARDS:

Genset: MG 30 C

Alternator: STAMFORD

Diesel Engine: CUMMINS ,4B3.9-G2

Standby Power: Continues running at variable load for duration of an emergency. No overload is permitted on these ratings.

Prime Power: Continues running at variable load for unlimited periods with 10% overload available for 1 hour in any 12 hour period.

CONFIGURATION:

Standard: Engine, alternator, cooling system, Base frame (excluding fuel tank), shock absorber, air inlet system, control box (including mains floating charge), plastic fan blades (when the engine and water tank do not bring). **Optional:** Base frame (including fuel tank), water jacket heater, fuel water separator, fuel heater, fuel level sensor (only supporting underframe tank), switch box (with switch), power switch, the water level sensor, motor anti condensation heater, automatic fueling system (only supporting base frame including fuel tank), battery frame.

Accessories: Silencer, bellow, exhaust silencing system accessories (with the matching engine), regular battery, starting cord assembly, data of gen-set, random tool (with the matching engine).

INDONESIA DEALER:

PT VIDISTAR INDOQUIP PRADANA

Plaza Summarecon Bekasi, Jl. Bulevar Ahmad Yani Kav 01, Level 7

Harapan Mulya, Medan Satria, Kota Bekasi

Phone: +62 21 2960 1461 / WA: +62 851 5520 7890

Email: sales@vip-equipment.com

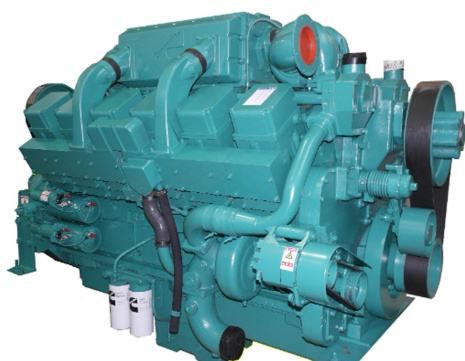
www.vip-equipment.com



**VIDISTAR
INDOQUIP
PRADANA**
Excellence in Every Interaction

Engine Specifications

ENGINE		
Manufacturer		CUMMINS
Model		4B3.9-G2
Engine Type		4-stroke diesel
Number of cylinders		6 Vertical in line
Bore and Stroke	mm	102 mm x 120 mm
Displacement	L	3.9 L
Cooling System		Coolant
Lube Oil Specifications		Sae 3 class 10W40 / API grade CD,CF
Compression Ratio		18.0:1
Fuel Oil Specifivations		Diesel
Fuel Consumption 100% PRP		6.7 L / H
Total oil capacity		9.5 L
Total coolant capacity		7.2 L
Governor	Type	Electrical
Air Filter	Type	Dry



- Cummins engines with advanced design, reliable performance, durable operation.
- Alloy-steel and connecting steel-lever, high durability
- High combustion efficiency and low fuel consumption, work continuously
- P/T pump injection technology, low cost, completely combustion

Note: All data sheets are for reference only and subject to change without prior notice.



OPEN TYPE

DIMENSION

OVERALL (L x W x H) : 1600 x 650 x 1200 (mm)

WEIGHT : 800 Kg

SILENT TYPE

DIMENSION

OVERALL (L x W x H) : 2200 x 1060 x 1300 (mm)

WEIGHT : 1080 Kg

INDONESIA DEALER:

PT VIDISTAR INDOQUIP PRADANA

Plaza Summarecon Bekasi, Jl. Bulevar Ahmad Yani Kav 01, Level 7
Harapan Mulya, Medan Satria, Kota Bekasi
Phone: +62 21 2960 1461 / WA: +62 851 5520 7890
Email: sales@vip-equipment.com
www.vip-equipment.com

Generator

Generator		
Manufacturer		STAMFORD
Poles	No.	4
Insulation	Class	H / H
Enclosure		IP23
Exciter system		PMG
A.V.R. Model		MX321
Coupling system		Direct

FEATURES

- Utilising wire-wound* (random-wound) technology
- Environment alternators are the industry benchmark for all generator set configurations.
- Brushless excitation with AVR
IP21, IP22, IP23, IP44 enclosure protection.
- The ideal solution for marine/offshore, UPS, telecoms, basic and advanced protection, construction and other continuous or standby power applications.

STAMFORD



INDONESIA DEALER: PT VIDISTAR INDOQUIP PRADANA

Plaza Summarecon Bekasi, Jl. Bulevar Ahmad Yani Kav 01, Level 7
Harapan Mulya, Medan Satria, Kota Bekasi
Phone: +62 21 2960 1461 / WA: +62 851 5520 7890
Email: sales@vip-equipment.com
www.vip-equipment.com

CONTROL PANEL MODEL

DEEP SEA

Key benefits

- Ultimate size to feature ratio.
- Automatically transfers between mains (utility) and generator.
- Hours counter provides accurate information for monitoring and maintenance periods.
- User-friendly set-up and button layout for ease of use.
- Multiple parameters are monitored simultaneously which are clearly displayed on the largest back-lit icon display in its class.
- The module can be configured to suit a wide range of applications.
- Compatible with a wide range of CAN engines including Tier 4.
- IP65 rating (with optional gasket) offers increased resistance to water ingress.

Key features

- Auto Start and AMF mode in one module.
- J1939-75 support and CAN alarm ignore function.
- Alternator frequency & CAN speed sensing in one variant.
- Largest back-lit icon display in its class.
- Heated display option.
- Real time clock provides accurate event logging.
- Fully configurable via the fascia or PC using USB communication.
- Extremely efficient power save mode.
- 3 phase generator sensing.
- 3 phase mains (utility) sensing
- Compatible with 600 V ph to ph nominal systems.
- Generator/load power monitoring (kW, kVA, kVar, PF).
- Accumulated power monitoring (kWh, kVAh, kVarh).
- Generator overload protection.
- Generator/load current monitoring and protection.
- Fuel and start outputs (configurable when using CAN).
- 4 configurable DC outputs.
- 3 configurable analogue/digital inputs
- 4 configurable digital inputs.
- Configurable staged loading outputs.
- 3 engine maintenance alarms.
- Engine speed protection.
- Engine hours counter.
- Engine pre-heat.
- Engine run-time scheduler.
- Engine idle control for starting & stopping.
- Tier 4 engine instrumentation screens.
- Battery voltage monitoring.
- Start on low battery voltage.
- Configurable remote start input.
- 1 alternative configuration.
- Comprehensive warning, electrical trip or shutdown protection upon fault condition.
- LCD alarm indication.
- Event log (50)



Note : All data sheets are for reference only and subject to change without prior notice.